

THE GARDEN OF ENLIGHTENMENT

NG YAN LIN, SEBASTIAN

P1600076

DLA/FT/1A/01



THE INSPIRATION

Balinese
Garden @
HortPark

Colourful
Stem Cutting
Propagation
Plants



Perspective view of the Balinese Garden



Codiaeum variegatum



Heterotis rotundifolia



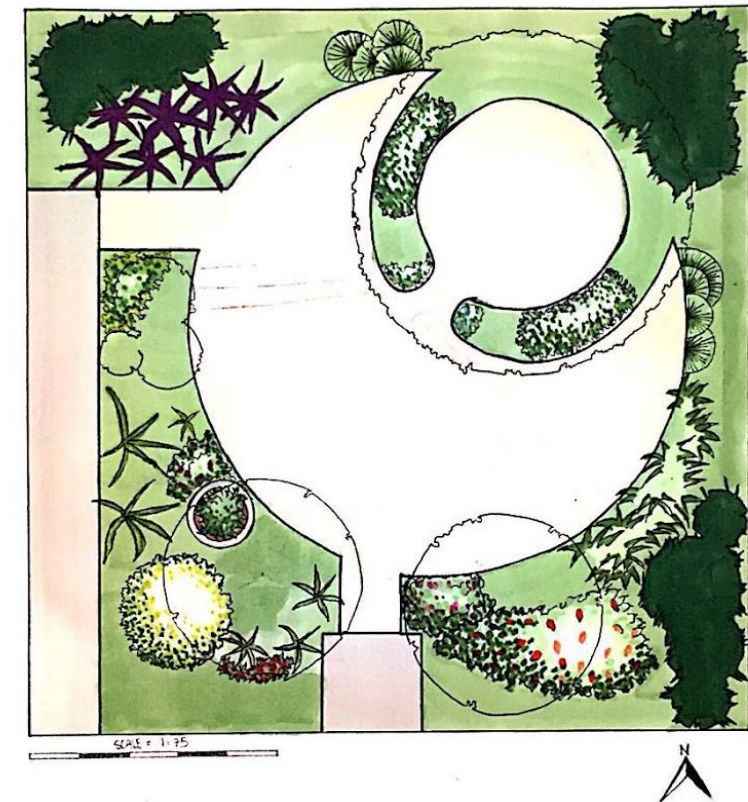
Cordyline fruticosa 'Firebrand'



Graptophyllum pictum
'Aurea Variegata'

Plants like *Codiaeum variegatum*, *Heterotis rotundifolia*, *Cordyline fruticosa* 'Firebrand' & *Graptophyllum pictum* 'Aurea Variegata' that are colourful, yet is able to propagate by stem cutting are extracted to attract visitor to my garden.

Also, the use of placing importance on my hardscape, while using the softscape to elevate the design was applied in my garden. Similar to the designing of a Balinese Landscape.



Drawn Plan of the Balinese Garden

THE INSPIRATION

The Design Principles extracted from this plot is the symmetry of the pavilion, datum of the water feature, unity and variety of the arrangement of the plants & its axis. It was chosen because of the similarity of design, plot shape and ambience I wanted to create in my garden.

The Treasure Box @ Singapore Garden Festival 2016

Design Principles & Applications



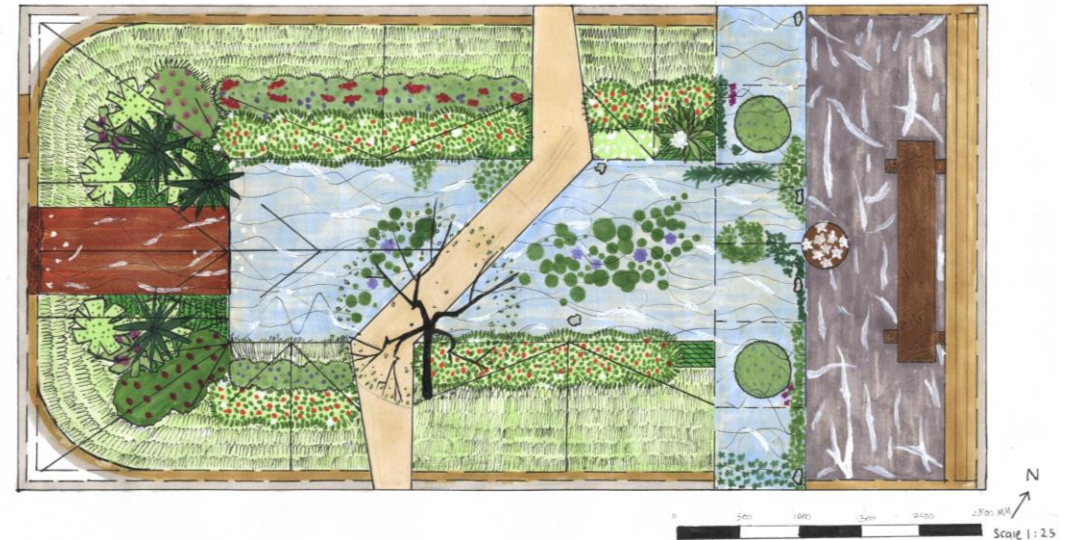
Perspective view from the pavilion in The Treasure Box



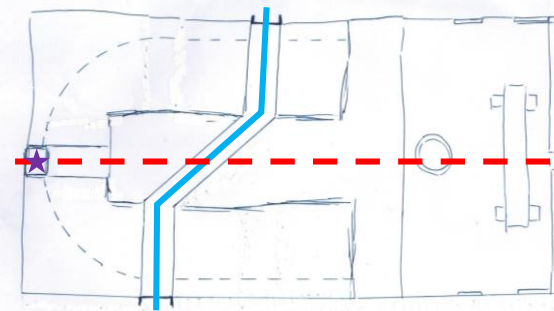
Photo of the water fall as the datum of the design



Picture of the pavilion in The Treasure Box



Drawn plan of The Treasure Box, there is unity and variety in the placement of vegetation



A quick sketch of The Treasure Box plan on site

LEGEND :

- :SYMMETRY + AXIS
- :ASYMMETRY
- ★ :DATUM + HIERACHY IN PLACEMENT

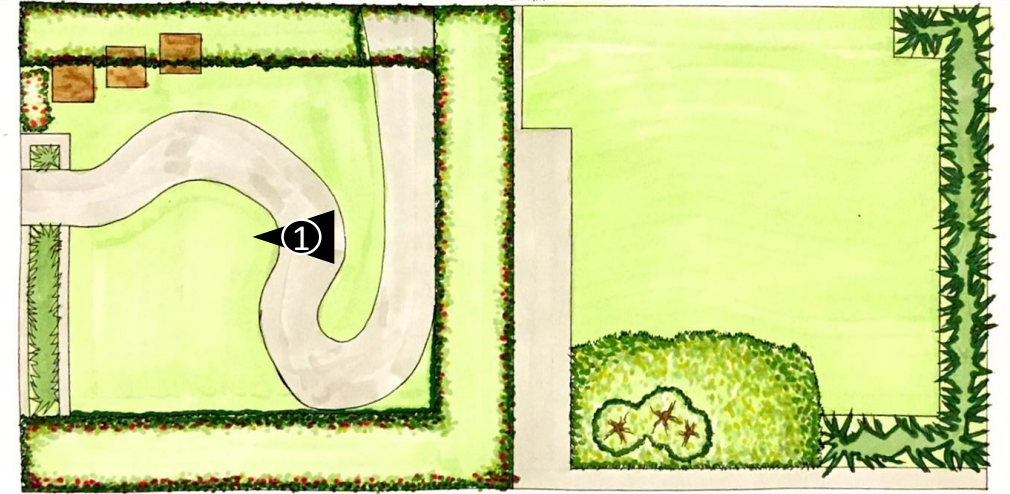
THE SITE

On site one good view was identified as it show cases a scenic view of the trees silhouette, especially during dawn and dusk when the warm glow of the sun contrast with the tree's form which I am able to utilize to inspire my visitors

The *Axonopus compressus*, *Syzygium campanulatum*, *Pandanus amaryllifolius* and meandering path was also retained as it match my design.



Photo of a good perspective view taken from Plot D04 to D05



Axonopus compressus

Syzygium campanulatum

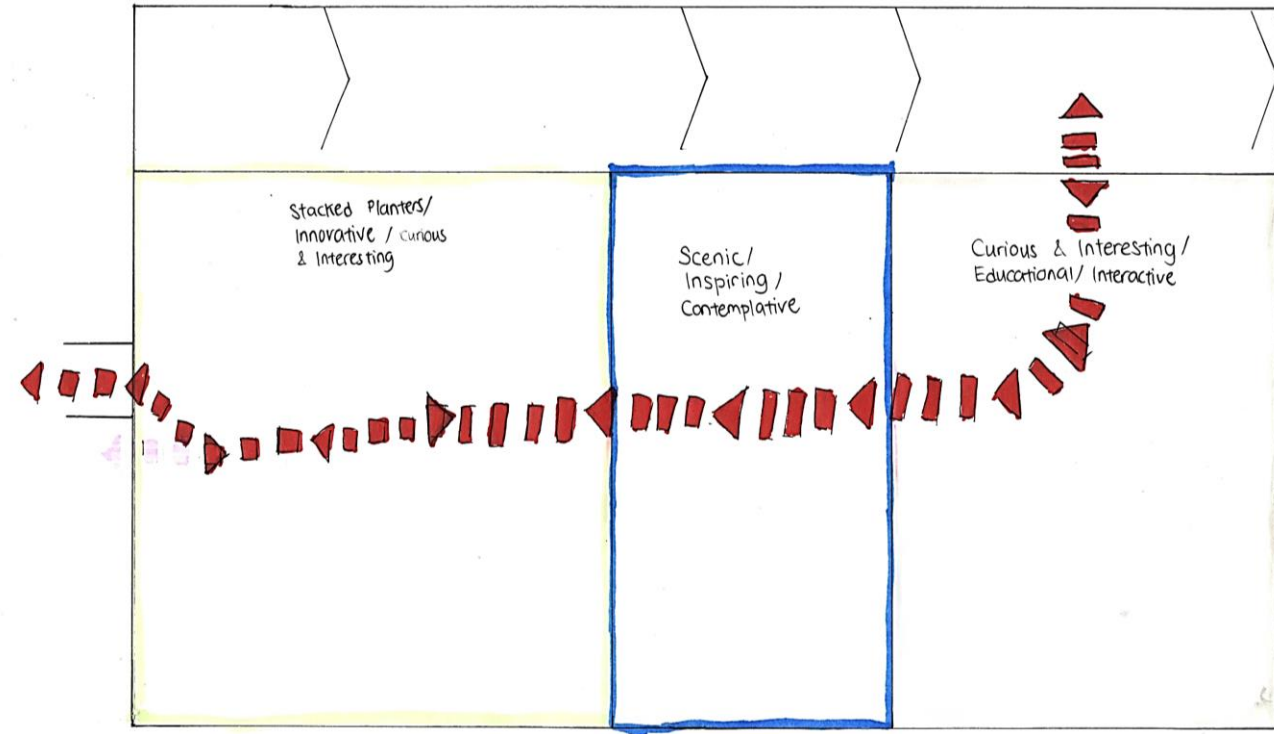
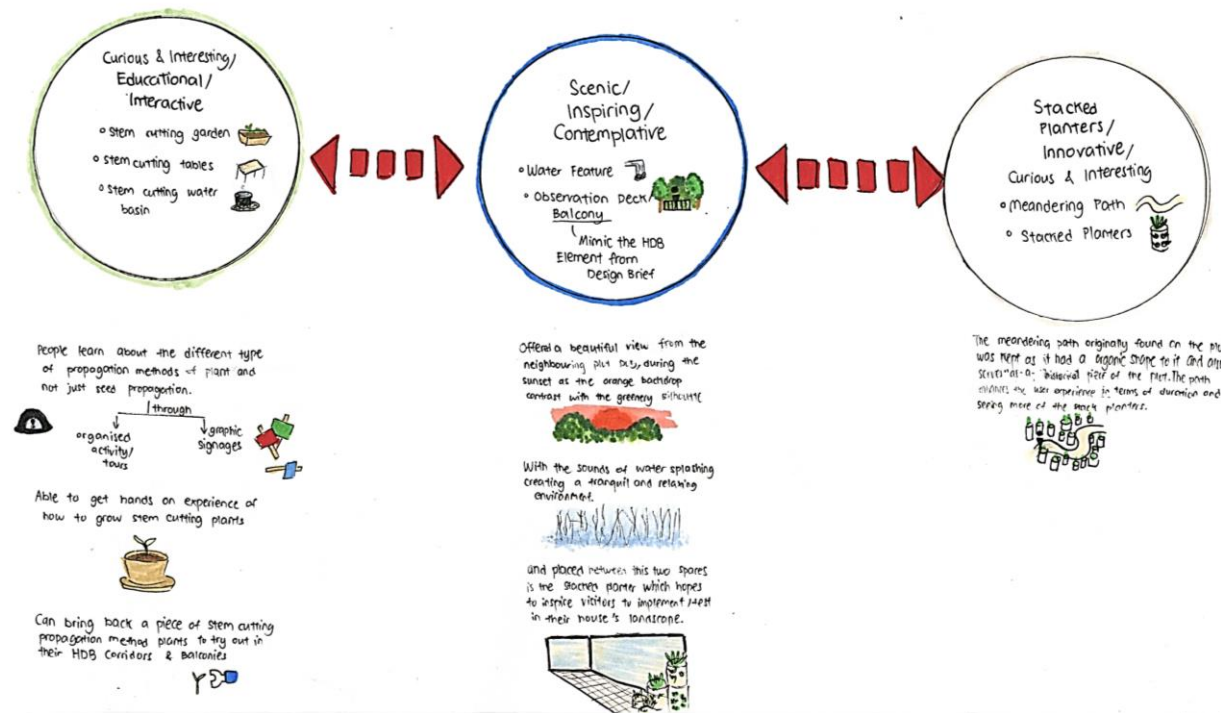
Pandanus amaryllifolius



Retaining the Concrete winding path



SPATIAL DIAGRAM & CONCEPT PLAN



THE CONCEPT

The design proposal is a play on the word “Enlightenment” which means to give (someone) greater knowledge and understanding about a subject or situation (commonly associated with religious/spiritual matters) through different landscape spatial experience visitors would be enlightened with knowledge with easy plant propagation method of plants and get to interact with various landscape elements which is able attract, inspire and enable visitors to easily grow plants in stacked planters to spice up a dull corner in their HDB balconies or corridors.

THE DESIGN OBJECTIVES

- Is able to inspire visitor to use these stacked planters for their own HDB Corridors or Balconies
- Enables visitor to gain greater knowledge and understanding about propagation method
- Attract visitors to enter my garden
- Create different landscape spatial experience
- An Easy propagation method
- Users can get to interact with various landscape elements

THE DESIGN STRATEGIES

- Scenic view of stacked planters and neighbouring plot from pavilion
- Usage of signage on “How to do so” and conducting of workshop/tours.
- Usage of vibrant and fragrant (herbs) planting palette
- Using enclosed/open space and placement of landscape elements
- Stem cutting propagation method
- Get to try out hands on how to grow their own stem cutting propagation plants

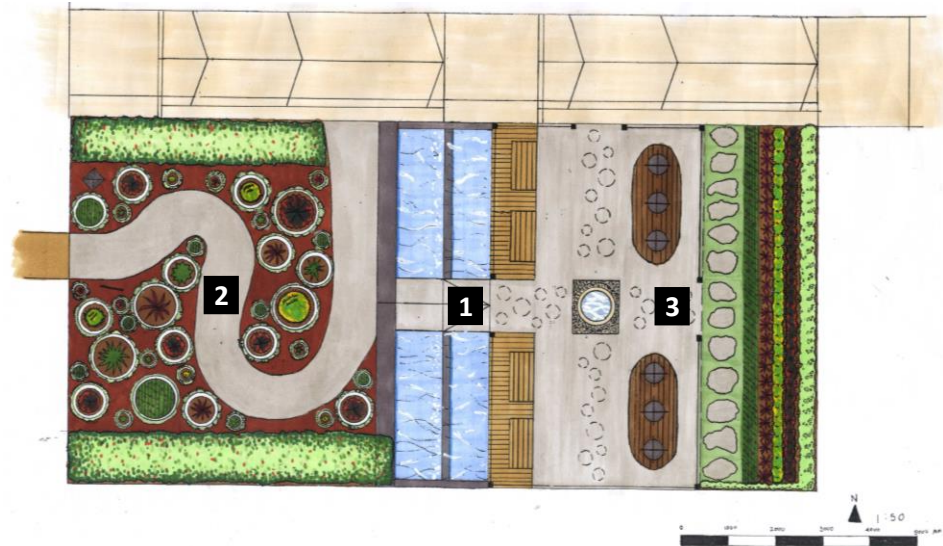


THE CONCEPT & MOOD PICTURES

Is a play on the word “Enlightenment” which means to give (someone) greater knowledge and understanding about a subject or situation. (commonly associated with religious/spiritual matters)
Through an enlightenment of knowledge about the stem cutting plant propagation method of vibrant plants which is able attract, inspire and enable visitors to easily grow plants to spice up a dull corner in their HDB balconies or corridors through signage or conducted workshop/tours.



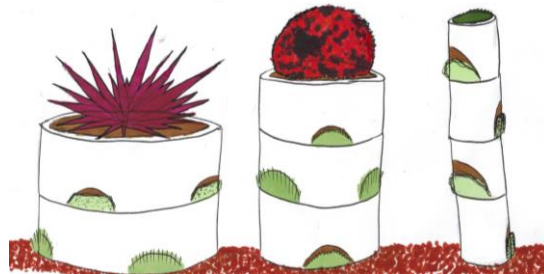
THE DESIGN



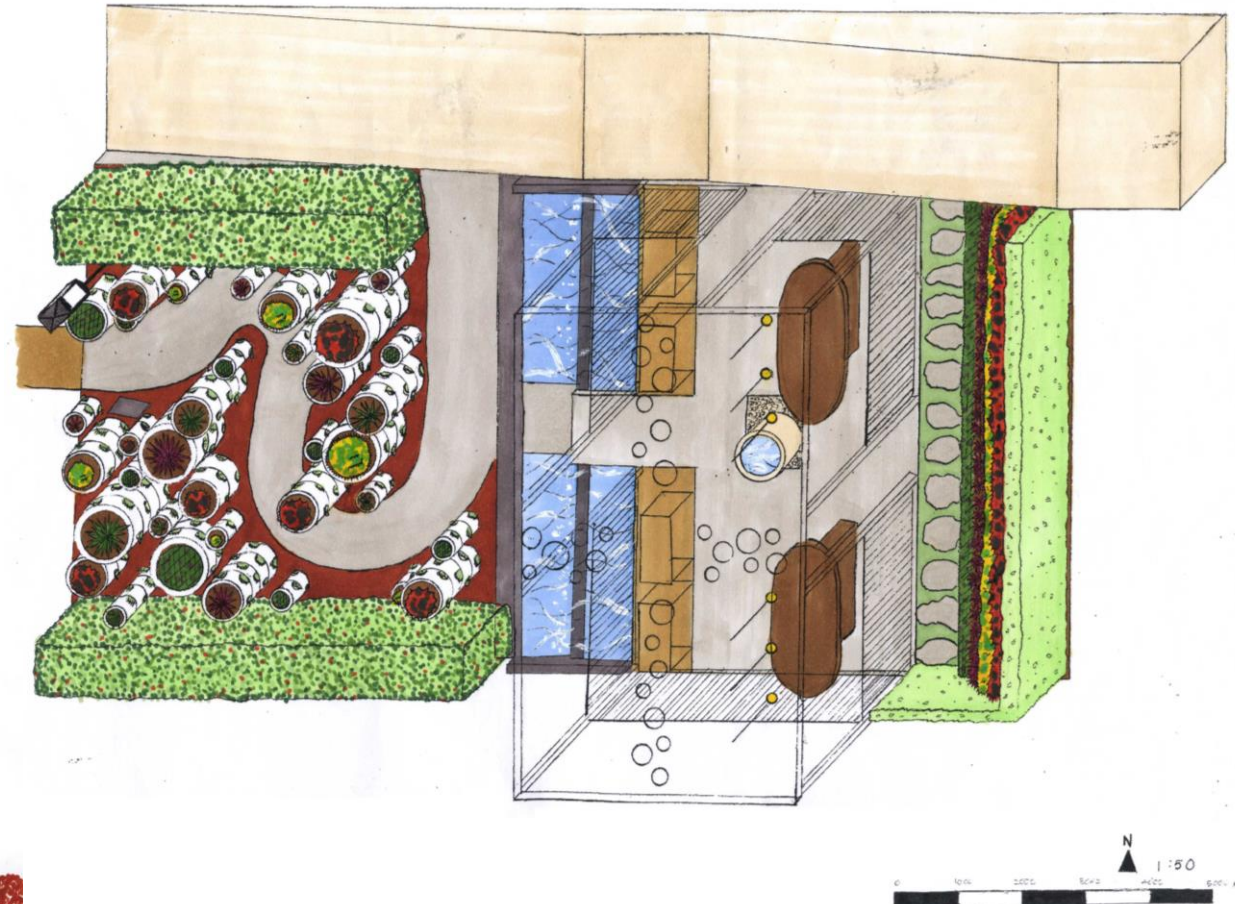
Rendered plan of The garden of enlightenment which has 3 spaces

LEGEND:

- 1** : INSPIRING SPACE
- 2** : STACKED PLANTERS SPACE
- 3** : EDUCATIONAL SPACE

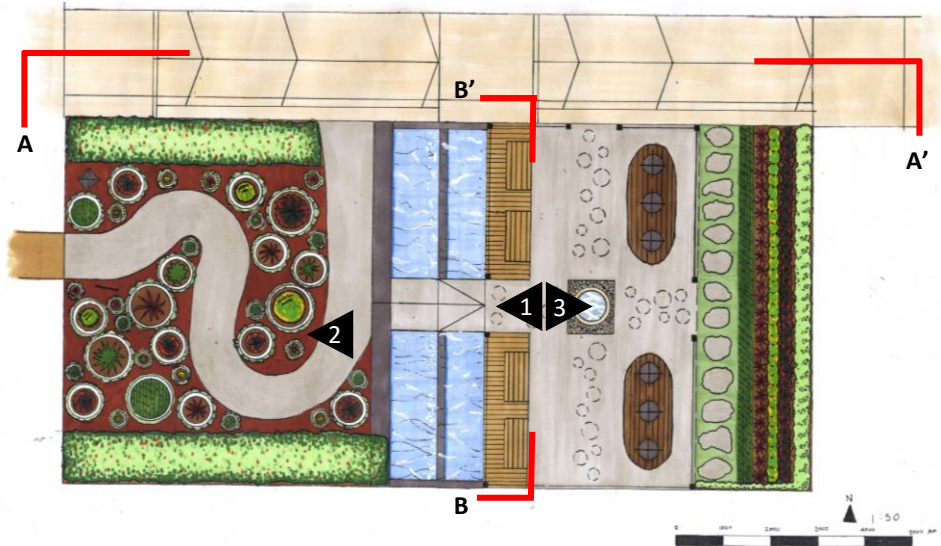


Sketch of my stacked planters

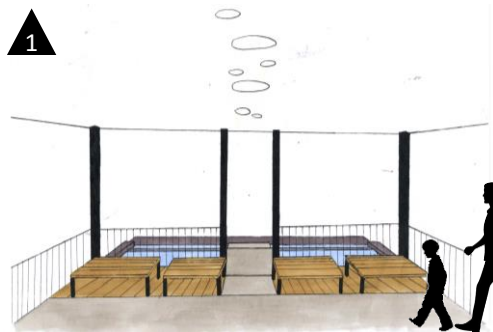
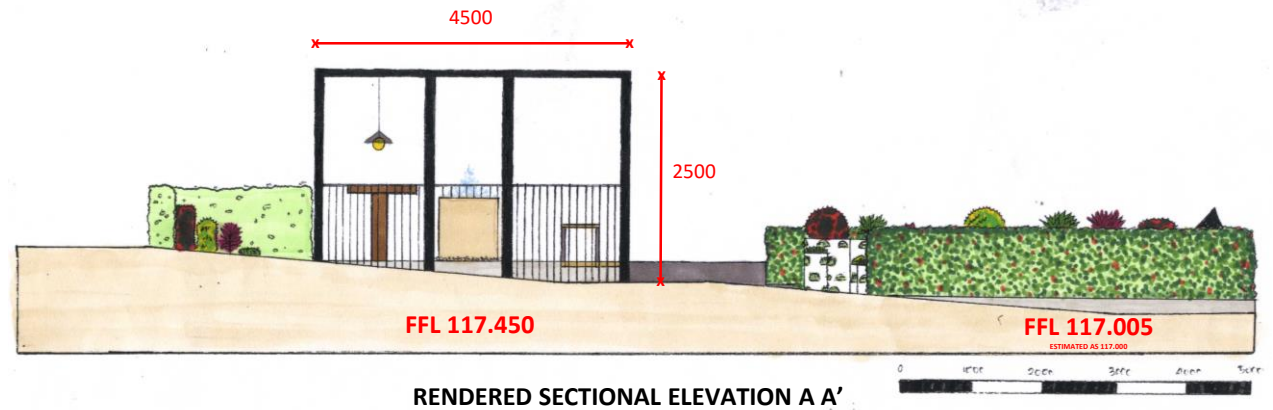


Rendered axonometric projection of The garden of enlightenment

THE DESIGN



Rendered plan of The garden of enlightenment labelled with perspective and sectional elevation



Rendered Perspective View of Inspiring Space



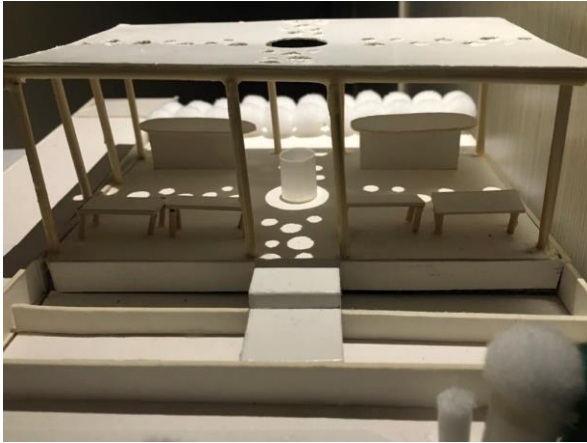
Rendered Perspective View of Stacked Planters Space



Rendered Perspective View of Educational Space



THE STUDY MODEL & WRITE UP



Learning can occur in any environment be it in school or outside of school. Therefore, within this design the very structured and symmetrical pavilion is to mimic a school environment based on subjects and grades. While, the meandering and free flowing path represent being out of school and learning life skills. This path then link to the next plot to show that learning is life long.

THE SOFTSCAPE

LEGEND:

1 : INSPIRING SPACE

2 : STACKED PLANTERS SPACE

3 : EDUCATIONAL SPACE



Graptophyllum pictum
'Aurea Variegata'



Heterotis rotundifolia



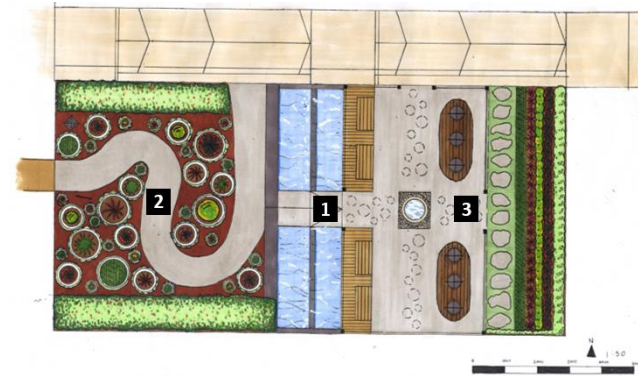
Codiaeum variegatum



Syzygium campanulatum



Cordyline fruticosa 'Baby Ti'



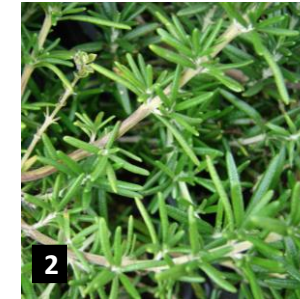
Pandanus amaryllifolius



Thymus vulgaris



Axonopus compressus



Rosmarinus officinalis



Polyscias filicifolia



Origanum vulgare



Ocimum basilicum
'Salad leaf'

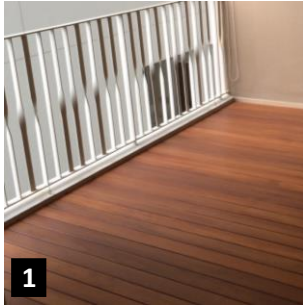
THE HARDSCAPE

LEGEND:

1 : INSPIRING SPACE

2 : STACKED PLANTERS SPACE

3 : EDUCATIONAL SPACE



1
Chengal wood deck
with Stained finish



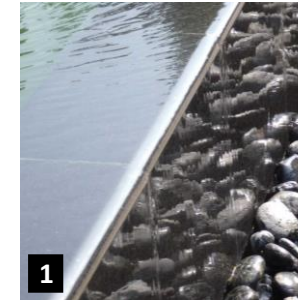
1 3
Mild Steel Pavilion
Beams [SHS] With
Painted finish



1 3
Pervious Concrete deck



2
Wood Chippings (Mulch)



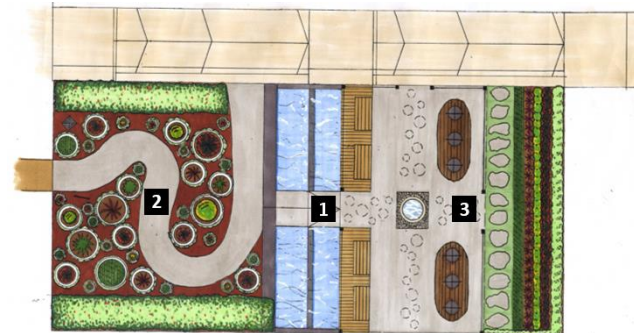
1
Granite water feature with
polished finish and polished
grey pebbles



1 3
Polycarbonate pavilion roofing



2
Polypropylene stacked planters



1 3
Aluminium handrails with
painted finish



3
Chengal Wood Table
with Natural finish



1
Mild Steel Bench Beams
[SHS] With Painted finish
& Chengal Wood with
Stained finish



2
Concrete paving
with Raw (screed) finish



3
Granite water feature with
flamed finish



3
Quartzite stepping
stone with raw finish



2 3
Glass light bulbs and Mild Steel
lamp post with Painted finish

REFERENCES

- Google Search [9 August 2016] Enlighten meaning https://www.google.com.sg/search?biw=1280&bih=603&q=enlighten&oq=enlighten&gs_l=serp.3..35i39l2j0i67l8.5337.5337.0.5466.1.1.0.0.0.83.83.1.1.0....0...1c.1.64.serp..0.1.82.lyDxIkF8d-w
- Hawaii Tropical Botanical Garden , (Sm.) Jacq.-Fél. [9 August 2016] Heterotis rotundifolia <http://www.htbg.com/Melastomataceae/DIS-010-12-23-001/index.php?p=Heterotis-rotundifolia.jpg>
- Plant ant [9 August 2016] List <http://www.plantant.com/supplierimages/image.php/cordylina-fruticosa-black-magic-ti-plant-cordylina-terminalis-dracaena-terminalis-1000420224-1405729117.jpg?width=1000&height=1000&image=/public/supplierimages/plants/1000420224-1405729117.jpg>
- Plant this [9 August 2016] Graptophyllum pictum 'Aurea Variegata' <http://plantthis.com.au/plant-information.asp?gardener=25565&tabview=photos&plantSpot=>
- John&Jacq's Garden [9 August 2016] Codiaeum variegatum (Croton, Variegated/Garden Croton, Variegated Laurel) <http://www.jaycjayc.com/codiaeum-variegatum-cultivars-croton/>
- HOST [9 August 2016] Balinese Garden <http://1-host.sg/locations/balinese-garden/>
- Singapore Garden Festival [9 August 2016] Singapore Garden Festival expects to hit 400,000 visitorship after the weekend closes <https://www.singaporegardenfestival.com/media-centre/media-releases/2016/singapore-garden-festival-expects-to-hit-400000-visitorship-after-the-weekend-closes>
- jualtanamanhias.net [10 August 2016] Pucuk-merah <http://jualtanamanhias.net/pucuk-merah/>
- Wikipedia [10 August 2016] Pandanus amaryllifolius https://en.wikipedia.org/wiki/Pandanus_amaryllifolius
- D'Green Services [10 August 2016] What's The Right Type Of Grass For Your Garden ??? <http://dgreenservices.weebly.com/grass.html>
- CAMEMBERU [10 August 2016] Singapore Garden Festival 2016 at Gardens by the Bay <http://www.camemberu.com/2016/07/singapore-garden-festival-2016-at.html>
- .jughandlecreekfarm [11 August 2016] Common Name/ Botanical Name <http://www.jughandlecreekfarm.org/wp-content/uploads/plant-lists/l.htm>
- Mgonline [11 August 2016] Ti Plant <http://mgonline.com/articles/ti.aspx>
- Wikimedia Commons [10 August 2016] File:Starr 070906-8836 Rosmarinus officinalis.jpg https://commons.wikimedia.org/wiki/File:Starr_070906-8836_Rosmarinus_officinalis.jpg
- Pantry Garden Herbs [11 August 2016] Oregano, Greek <http://pantrygardenherbs.com/shop-for-organic-herbs/oregano-varieties/oregano-greek/>
- Pharmasaat [11 August 2016] Ocimum basilicum, Basil salad <http://www.pharmasaat.de/onlineshop/herb-seeds/Ocimum-basilicum-Basil-salad::134.html?language=en>
- The Floor Gallery [11 August 2016] Chengal Wood Decking's Three-Step Maintenance <http://www.thefloorgallery.sg/chengal-wood-deckings-three-step-maintenance/>



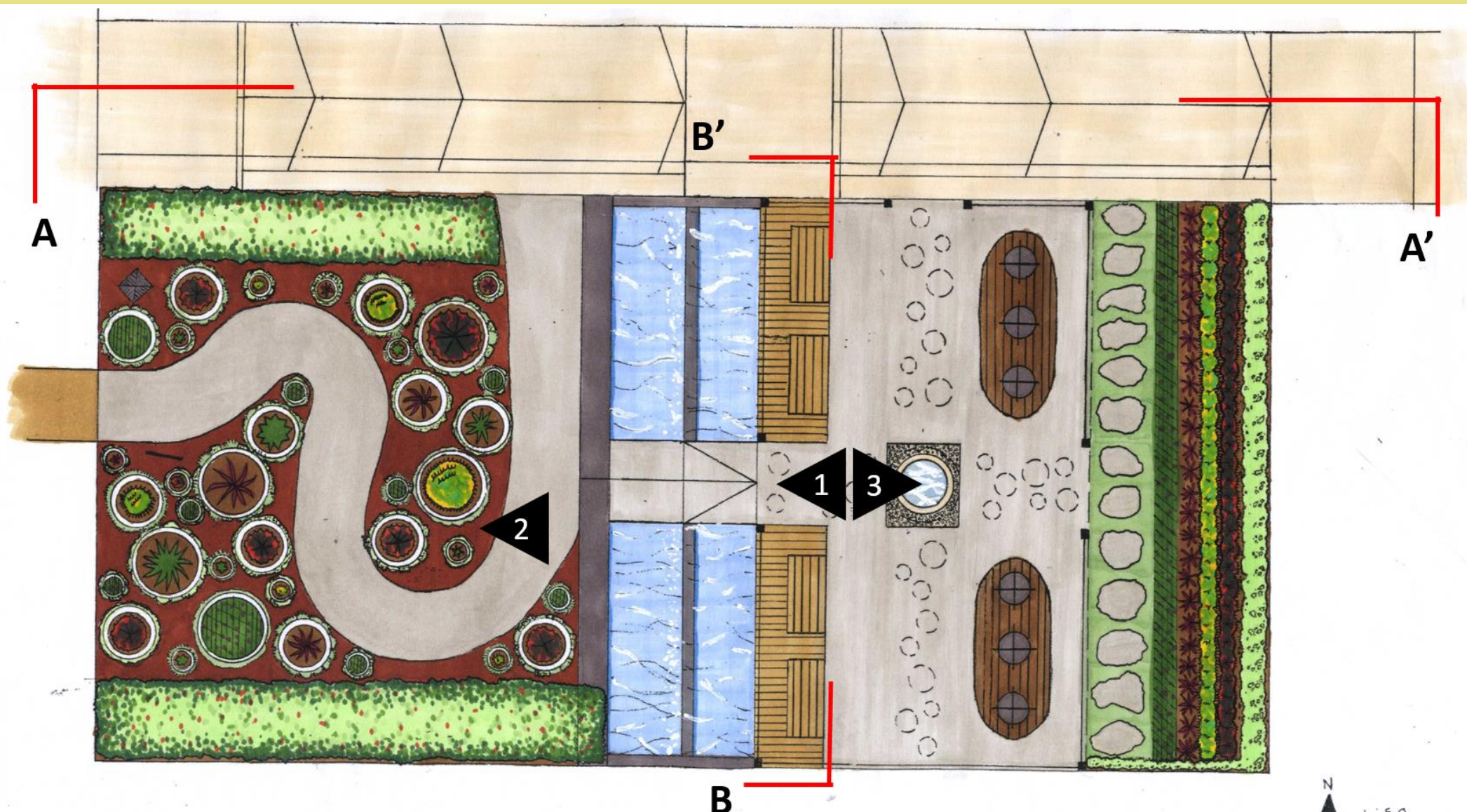
REFERENCES

- Pinterest, www.sculpturebythelakes.co.uk [11 August 2016] Sculpture by the Lakes <https://www.pinterest.com/simongudgeon/sculpture-by-the-lakes/>
- Bay Area Pervious Concrete [11 August 2016] Blog <http://www.bayareaperviousconcrete.com/blog/>
- Pinterest, Cost Plus World Market [11 August 2016] furniture <https://www.pinterest.com/pin/423549539932629705/>
- SP Blackboard, Emily Lee [11 August 2016] 12 PLT Lecture 12 Hardscape Materials (Part 2) https://esp.sp.edu.sg/bbcswebdav/pid-1623205-dt-content-rid-4113484_2/courses/BE511Y/12%20PLT%20Lecture%2012%20Hardscape%20Materials%20%28Part%20%29%281%29.pdf
- Dynamic Fabrications [11 August 2016] Aluminium Balustrade <http://dynamicfabrications.com.au/aluminium.html>
- Kincumbersand [11 August 2016] Mulch <http://www.kincumbersand.com.au/mulch>
- Architectural Granite [11 August 2016] Large diameter Cylinder water feature <http://architecturalgranite.co.uk/bigcyl.html>
- Ask the Builder [11 August] Garden Stepping Stones <http://www.askthebuilder.com/garden-stepping-stones/>
- Snapdeal [11 August 2016] Malhotra Plastic Stack A Pot For Floor Set Of 7 Pcs (6 Planters +1 Drip Tray) Terracotta Color <http://www.snapdeal.com/product/malhotra-plastic-brown-polypropylene-potsset/1895560520>
- Archi Expo [11 August 2016] Polycarbonate roofing panel / with UV protection / corrugated <http://www.archiexpo.com/prod/palram/product-3682-915992.html>
- LightWorkers World, Joleen (Bridges) Halloran [11 August 2016] 3 Stages of Enlightenment <http://www.lightworkersworld.com/2013/03/3-stages-of-enlightenment/>
- ESSE Landscape [11 August 2016] Gravel & resin <http://www.esseland.co.uk/garden-construction/landscaping-materials/gravel-resin/>
- BBC [11 August 2016] Hardwood cuttings http://www.bbc.co.uk/gardening/basics/techniques/propagation_hardwood1.shtml
- Flickr, Ben von Matterhorn [11 August 2016] Girl sitting on a bench <https://www.flickr.com/photos/benvonmatterhorn/6189173968>
- BC Living [11 August 2016] Codiaeum Variegatum - A Tropical Beauty Inside and Out <http://www.bcliving.ca/garden/codiaeum-variegatum-a-tropical-beauty-inside-and-out>
- TOP topicals [11 August 2016] Graptophyllum pictum http://toptropicals.com/catalog/uid/Graptophyllum_pictum.htm
- Desktop Wallpaper HD [12 August 2016] Romantic wallpapers <http://www.desktopwallpaperhd.net/tag/romantic.html>
- raofkinan [12 Augst 2016] rustic furnitures http://raof-ecoart.blogspot.sg/2010_10_01_archive.html

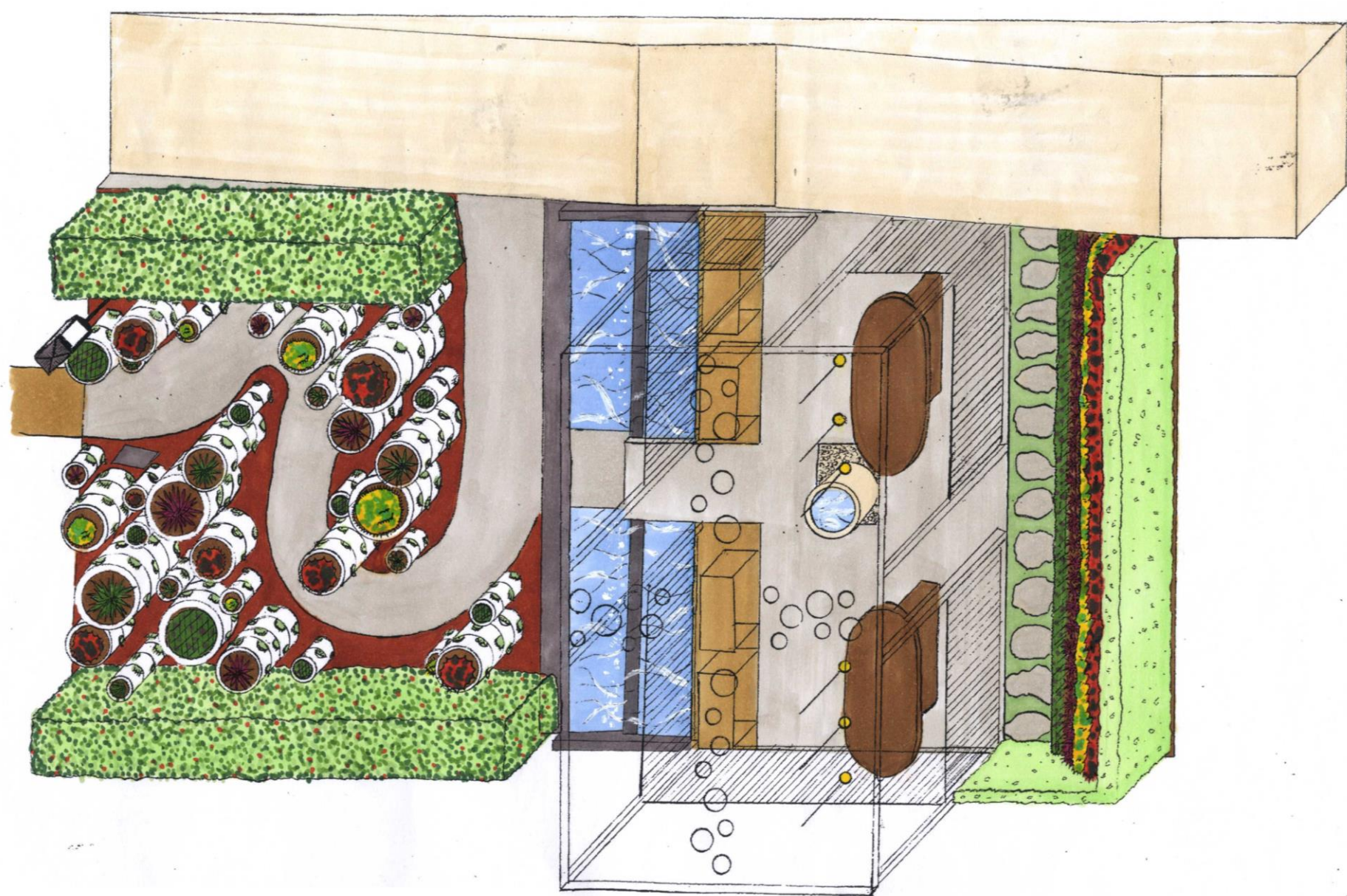


THE GARDEN OF ENLIGHTENMENT

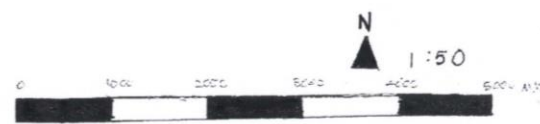
BY NG YAN LIN, SEBASTIAN P1600076 DLA/FT/1A/01



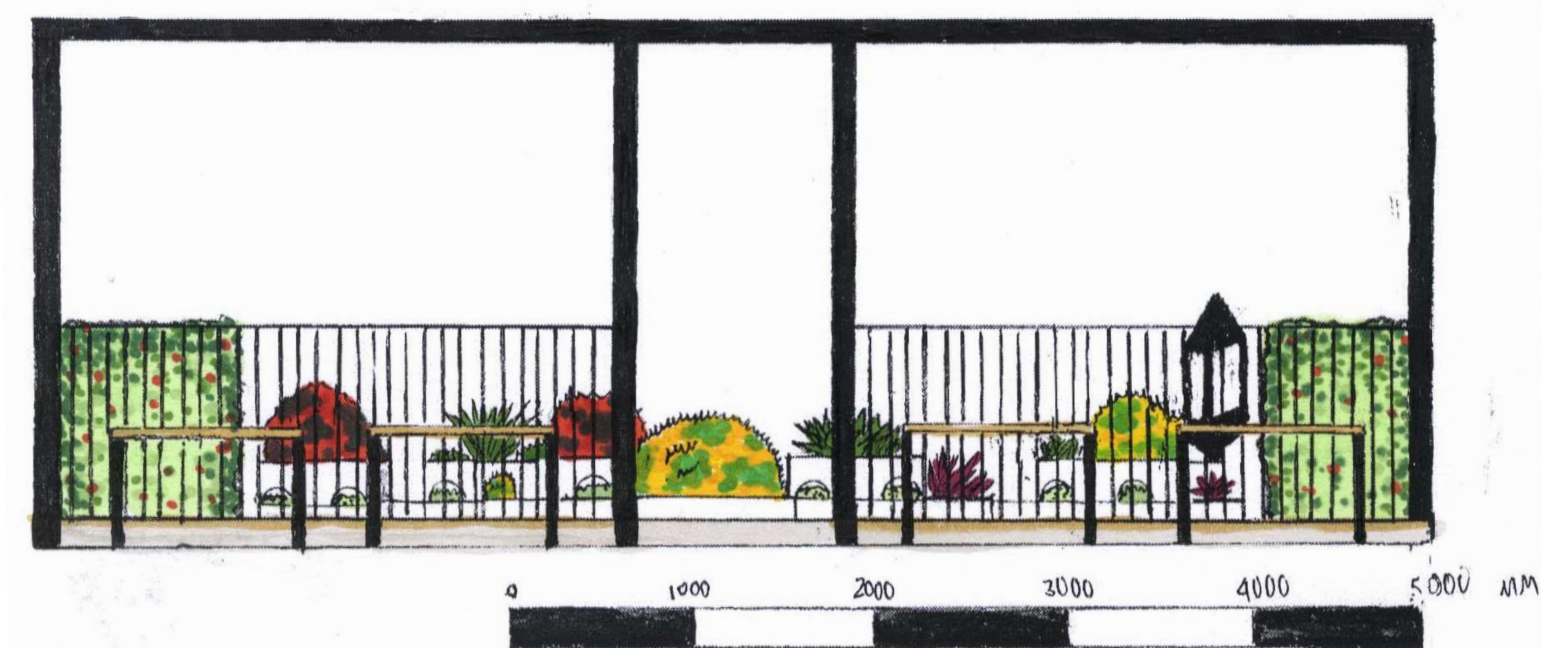
RENDERED PLAN VIEW
WITH SECTIONAL ELEVATION AND PERSPECTIVE LABELS



RENDERED AXONOMETRIC DRAWING



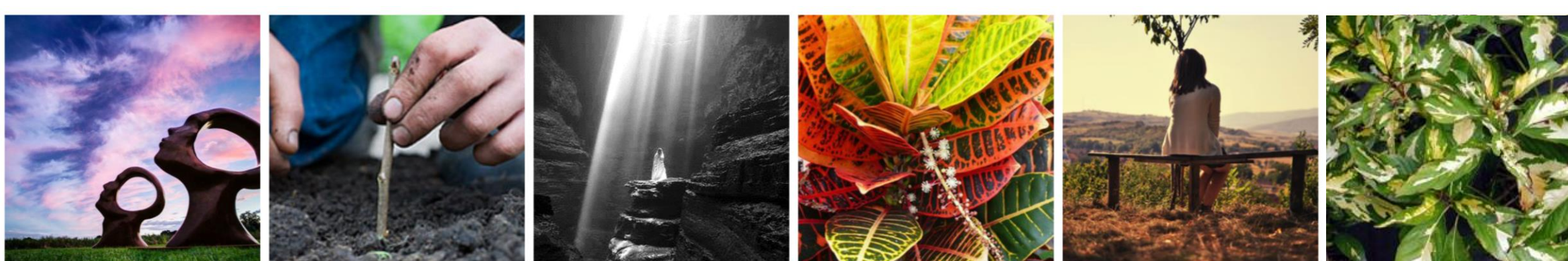
RENDERED SECTIONAL ELEVATION A A'



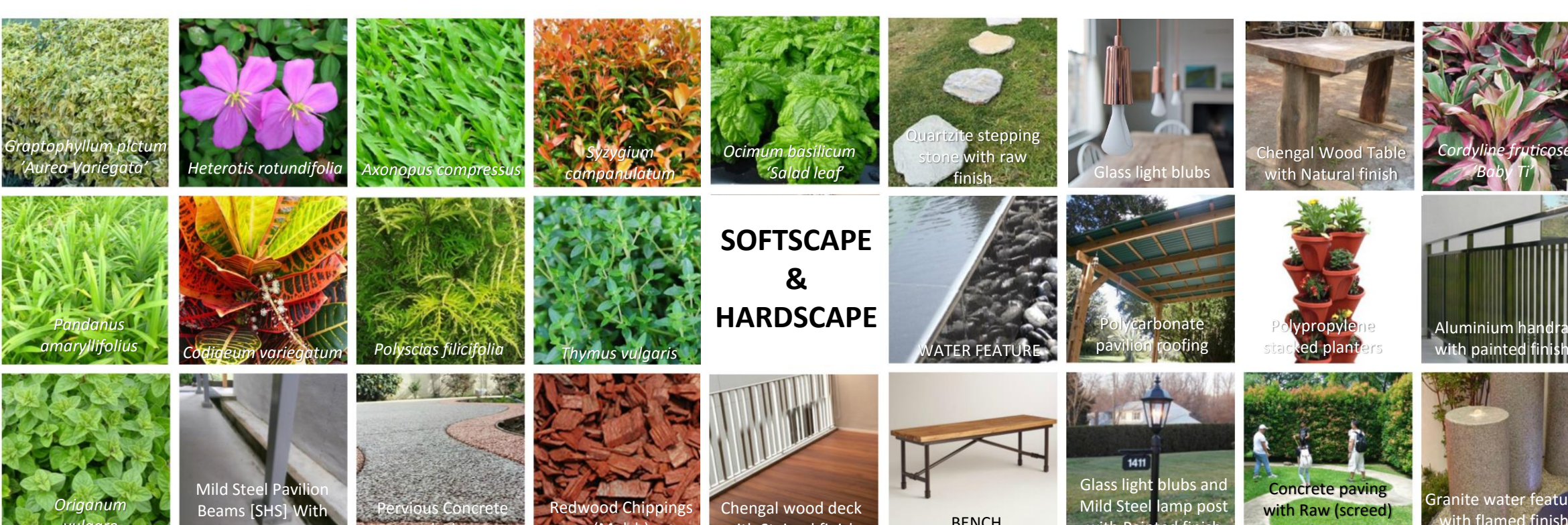
RENDERED SECTIONAL ELEVATION B B'



PERSPECTIVE VIEW of (from left to right) Inspiring Space, Stacked Planters Space & Educational Space



MOOD IMAGES



SOFTSCAPE
&
HARDSCAPE

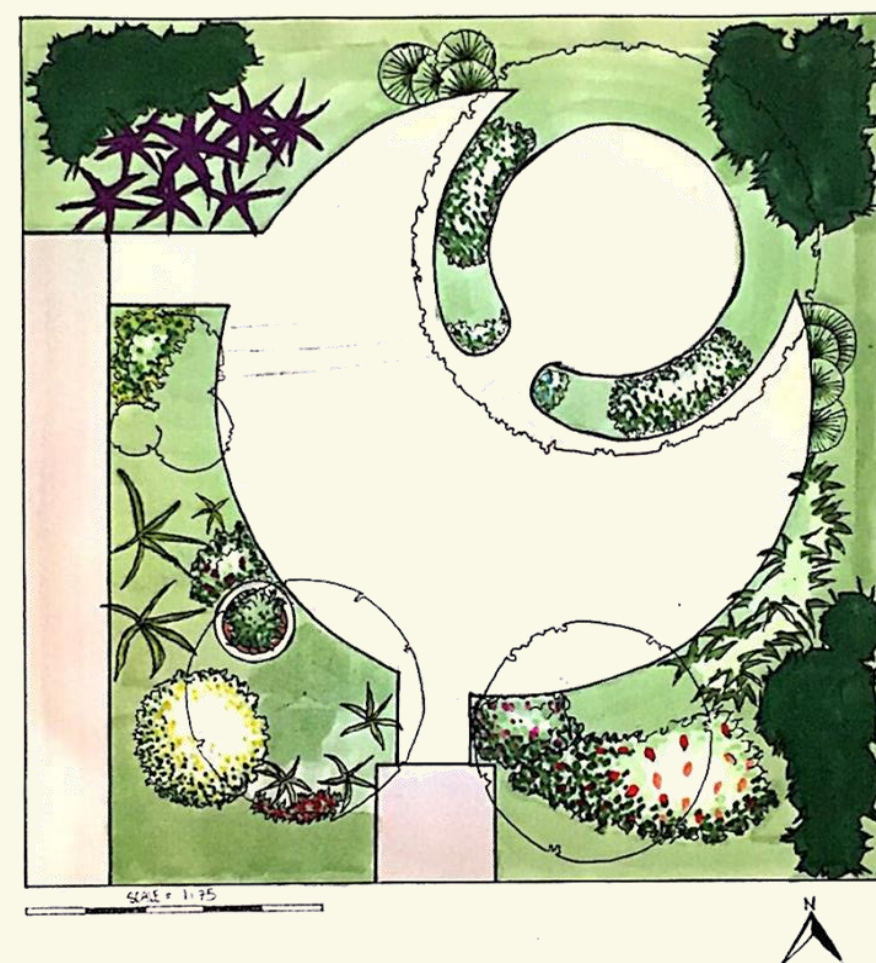
THE STUDY MODEL



THE WALK THROUGH EXPERIENCE

Setting foot in the pavilion users would be greeted by an array of light peeping through the pavilion's roof setting the mood of the garden. As you take a sit on the benches on looking the scenic view of the wide stacked planters and the neighbouring tall plants, visitor would be inspired to use these stacked planters for their own HDB Corridors or Balconies. Intrigued, they reenter the pavilion to find sign teaching them How to and get to bring a cutting home to try.

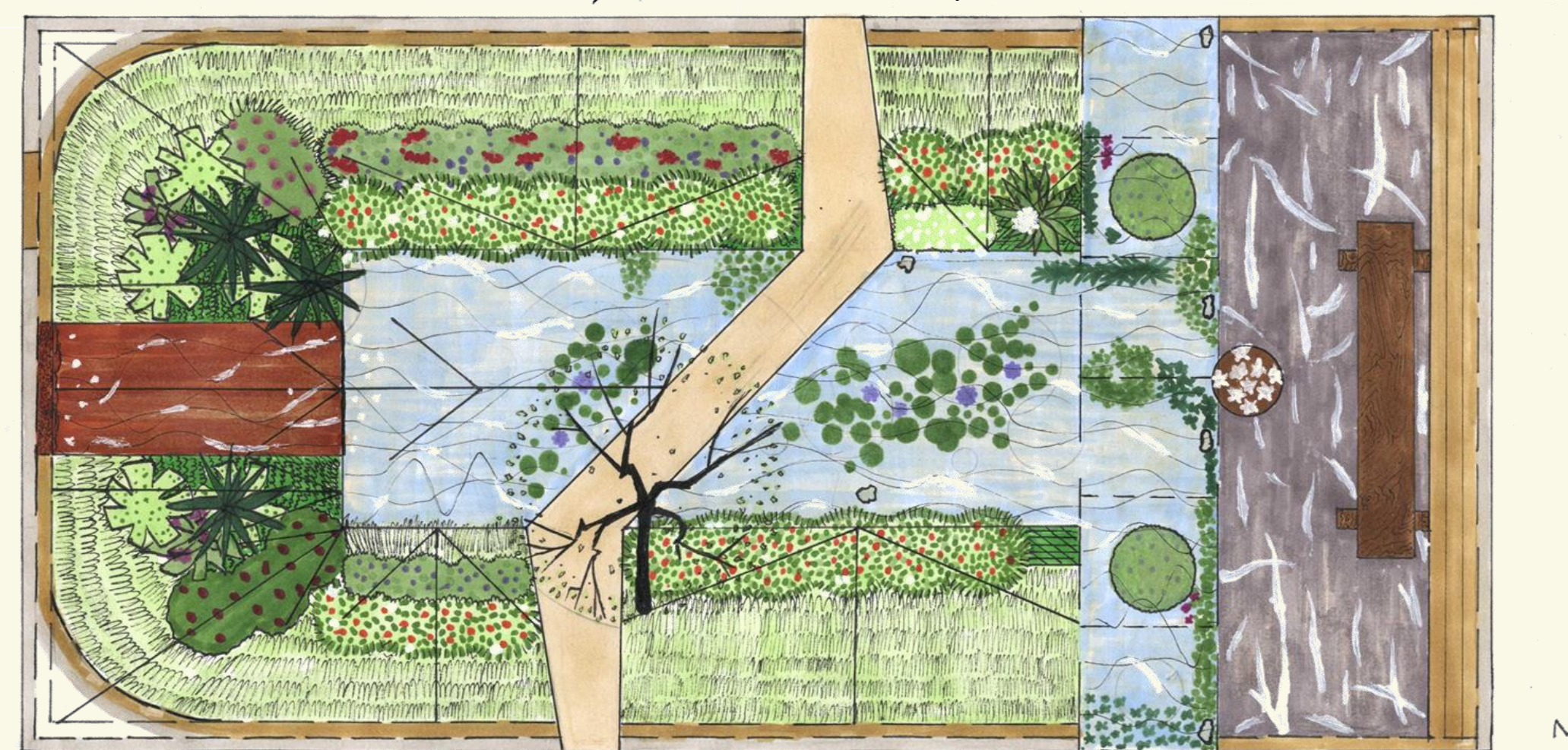
THE INSPIRATION



BALINESE GARDEN @ HORTPARK

Plants like *Codiaeum variegatum*, *Heterotis rotundifolia*, *Cordyline fruticosa* 'Firebrand' & *Graptophyllum pictum* 'Aurea Variegata' that are colourful, yet is able to propagate by stem cutting are extracted to attract visitor to my garden.

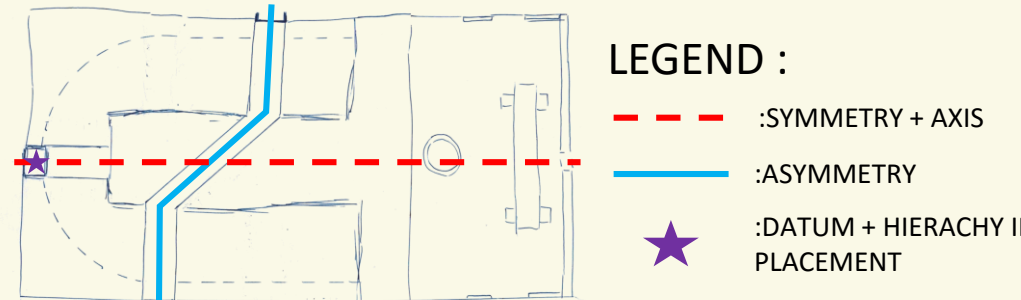
Also, the use of placing importance on my hardscape, while using the softscape to elevate the design was applied in my garden. Similar to the designing of a Balinese Landscape.



RENDERED PLAN of The Treasure Box, there is unity and variety in the placement of vegetation

THE TREASURE BOX @ SINGAPORE GARDEN FESTIVAL 2016

The Design Principles extracted from this plot is the symmetry of the pavilion, datum of the water feature, unity and variety of the arrangement of the plants & its axis. It was chosen because of the similarity of design, plot shape and ambience I wanted to create in my garden.



A quick sketch of The Treasure Box plan on site



Scenic View offered by neighbouring plots

DESIGN CONCEPT

The design proposal is a play on the word "Enlightenment" which means to give (someone) greater knowledge and understanding about a subject or situation (commonly associated with religious/spiritual matters) through different landscape spatial experience visitors would be enlightened with knowledge with easy plant propagation method of plants and get to interact with various landscape elements which is able to attract, inspire and enable visitors to easily grow plants in stacked planters to spice up a dull corner in their HDB balconies or corridors.

DESIGN OBJECTIVES

- Is able to inspire visitor to use these stacked planters for their own HDB Corridors or Balconies
- Enables visitor to gain greater knowledge and understanding about propagation method
- Attract visitors to enter my garden
- Create different landscape spatial experience

DESIGN STRATEGIES

- Scenic view of stacked planters and neighbouring plot from pavilion
- Usage of signage on "How to do so" and conducting of workshop/tours.
- Usage of vibrant and fragrant (herbs) planting palette
- Using enclosed/open space and placement of landscape elements
- Stem cutting propagation method
- Get to try out hands on how to grow their own stem cutting propagation plants

WRITE UP

Learning can occur in any environment be it in school or outside of school. Therefore, within this design the very structured and symmetrical pavilion is to mimic a school environment based on subjects and grades. While, the meandering and free flowing path represent being out of school and learning life skills. The path which then links to the next plot is to show that learning is a life long journey.

WATER FEATURE: Granite water feature with polished finish and polished grey pebbles
BENCH: Mild Steel Bench Beams (SHS) With Painted finish & Chengal Wood with Stained finish